

2.4mm Design Features

- Excellent performance up to 50GHz
- Low VSWR and insertion loss
- Rugged construction for reliability
- Mechanically compatible with 1.85mm connector series

Main Specifications

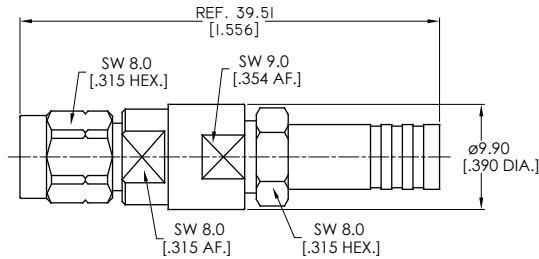
- Impedance: 50Ω
- Frequency range: DC~50GHz
- VSWR: ≤1.15
- Dielectric withstanding voltage(V.R.M.S.): 750V
- Durability: ≥500

Material/Plating

- Body: Stainless steel Passivated
- Center Conductor: Beryllium copper Gold
- Insulators: PEI

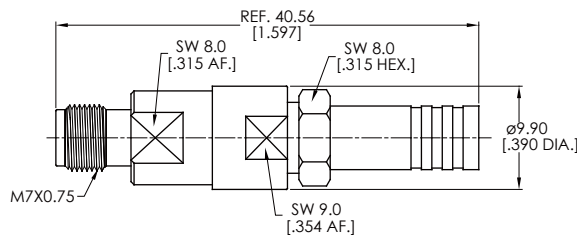
Straight Cable, Plug (Male)

Connector No.	Cable	Body Plating
ANO 2211-2013	PLEX-130P	Passivated



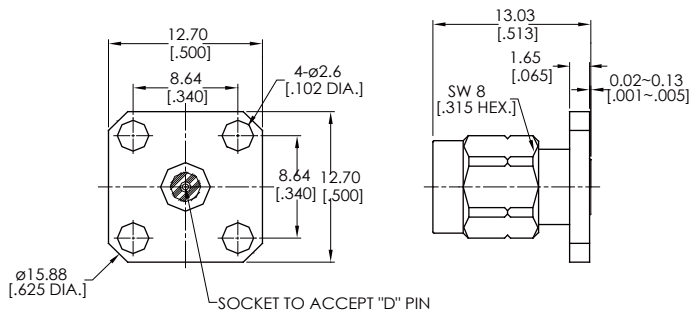
Straight Cable, Jack (Female)

Connector No.	Cable	Body Plating
ANO 2212-2016	PLEX-130P	Passivated



Flange Mount, Plug (Male)

Connector No.	D	MAX. Pin Depth
ANO 2211-3011-1	0.23	1.65
ANO 2211-3011-2	0.30	2.16
ANO 2211-3011-3	0.51	1.65



2.4mm Connectors Series



Connector No.	D	MAX. Pin Depth
ANO 2211-3018-1	0.23	1.65
ANO 2211-3018-2	0.30	2.00
ANO 2211-3018-3	0.51	2.00

Connector No.	D	MAX. Pin Depth
ANO 2211-3019-1	0.23	1.65
ANO 2211-3019-2	0.30	2.00
ANO 2211-3019-3	0.51	2.00

Connector No.	D	MAX. Pin Depth
ANO 2211-3020-1	0.23	1.65
ANO 2211-3020-2	0.30	2.00
ANO 2211-3020-3	0.51	2.00

Connector No.	D	MAX. Pin Depth
ANO 2211-3021-1	0.23	1.65
ANO 2211-3021-2	0.30	2.00
ANO 2211-3021-3	0.51	2.00

Flange Mount, Jack (Female)

Connector No.	D	MAX. Pin Depth
ANO 2212-3005-1	0.23	1.65
ANO 2212-3005-2	0.30	2.16
ANO 2212-3005-3	0.51	1.65
ANO 2212-3005-4	0.38	2.00
ANO 2212-3005-5	0.46	2.00

2.4mm Connectors Series



Connector No.	D	MAX. Pin Depth
ANO 2212-3006-1	0.23	1.65
ANO 2212-3006-2	0.30	2.16
ANO 2212-3006-3	0.51	1.65
ANO 2212-3006-4	0.38	2.00
ANO 2212-3006-5	0.46	2.00

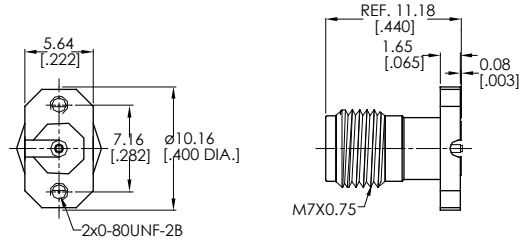
Connector No.	D	MAX. Pin Depth
ANO 2212-3009-1	0.23	1.65
ANO 2212-3009-2	0.30	2.16
ANO 2212-3009-3	0.51	1.65
ANO 2212-3009-4	0.38	2.00
ANO 2212-3009-5	0.46	2.00

Connector No.	D	MAX. Pin Depth
ANO 2212-3012-1	0.23	1.65
ANO 2212-3012-2	0.30	1.65
ANO 2212-3012-3	0.38	1.65
ANO 2212-3012-4	0.51	1.65

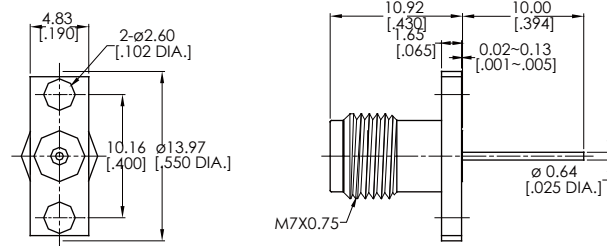
Connector No.	Body Plating
ANO 2212-3015	Passivated

Connector No.	D	MAX. Pin Depth
ANO 2212-3017-1	0.23	1.65
ANO 2212-3017-2	0.30	2.00
ANO 2212-3017-3	0.51	2.00

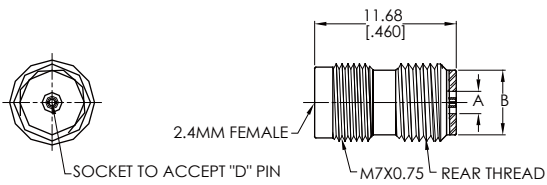
Connector No.	Body Plating
ANO 2212-3024	Passivated



Connector No.	Body Plating
ANO 2212-3025	Passivated



Rear Thread-In, Jack (Female)



Connector No.	D	MAX. Pin Depth	A	B	Rear Thread
ANO 2212-5010-1	0.23	1.65	1.17	5.33	1/4-36UNS-2A
ANO 2212-5010-2	0.23	1.65	1.17	5.08	M6x0.75-6g
ANO 2212-5010-3	0.30	2.00	1.38	5.33	1/4-36UNS-2A
ANO 2212-5010-4	0.38	2.00	1.60	5.33	1/4-36UNS-2A
ANO 2212-5010-5	0.46	2.00	1.82	5.33	1/4-36UNS-2A
ANO 2212-5010-5	0.51	2.00	1.84	5.33	1/4-36UNS-2A