

1.85mm Design Features

- Excellent performance up to 65GHz
- Low VSWR and insertion loss
- Rugged construction for reliability
- Mechanically compatible with 2.4mm connector series

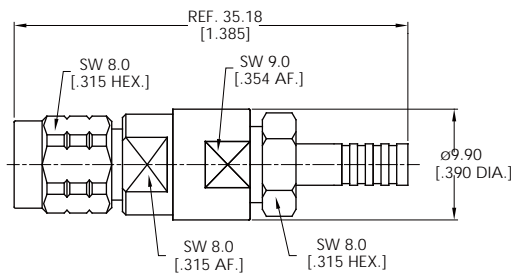
Main Specifications

- Impedance: 50Ω
- Frequency range: DC~65GHz
- VSWR: ≤1.25
- Dielectric withstanding voltage(V.R.M.S.): 750V
- Durability: ≥500

Material/Plating

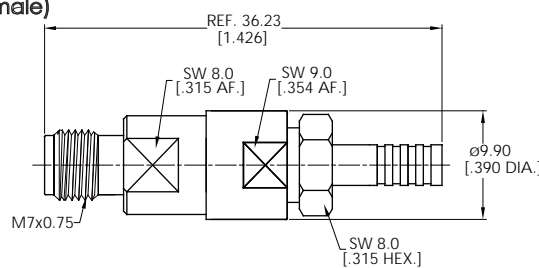
- Body: Stainless steel Passivated
- Center Conductor: Beryllium copper Gold
- Insulators: PEI

Straight Cable, Plug (Male)



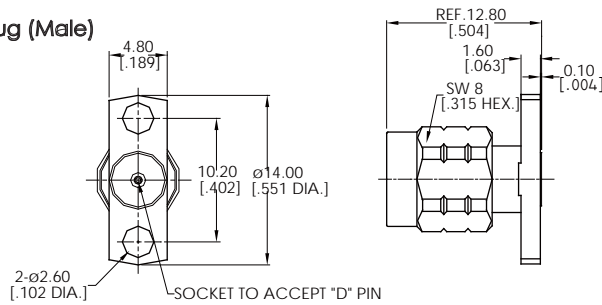
Connector No.	Cable	Body Plating
ANO 6211-2003	CXN3506	Passivation

Straight Cable, Jack (Female)

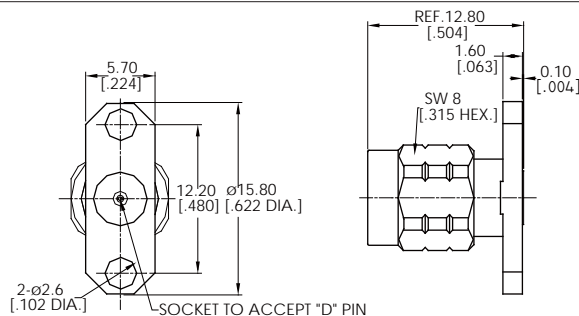


Connector No.	Cable	Body Plating
ANO 6212-2004	CXN3506	Passivation

Flange Mount, Plug (Male)



Connector No.	D	MAX. Pin Depth
ANO6211-3010-1	0.23	2.0
ANO6211-3010-2	0.30	2.0



Connector No.	D	MAX. Pin Depth
ANO6211-3011-1	0.23	2.00
ANO6211-3011-2	0.30	2.00

1.85mm Connectors Series



REF. 12.80
[.504]
1.60
[.063]
SW 8
[.315 HEX.]
0.10
[.004]

12.70
[.500]
8.60
[.339]
ø15.80
[.622 DIA.]
8.60
[.339]
12.70
[.500]
4-ø2.60
[.102 DIA.]
SOCKET TO ACCEPT "D" PIN

Connector No.	D	MAX. Pin Depth
ANO6211-3012-1	0.23	2.00
ANO6211-3012-2	0.30	2.00

Flange Mount, Jack (Female)

12.70
[.500]
8.60
[.339]
ø15.80
[.622 DIA.]
8.60
[.339]
12.70
[.500]
4-ø2.60
[.102 DIA.]
SOCKET TO ACCEPT "D" PIN

11.30
[.445]
1.60
[.063]
0.10
[.004]
M7x0.75
[R.P.]
8.30
[.327]

Connector No.	D	MAX. Pin Depth
ANO6212-3013-1	0.23	2.0
ANO6212-3013-2	0.30	2.0

5.70
[.224]
12.20
[.480]
ø15.80
[.622 DIA.]
2-ø2.60
[.102 DIA.]
SOCKET TO ACCEPT "D" PIN

11.30
[.445]
1.60
[.063]
0.10
[.004]
M7x0.75
[R.P.]

Connector No.	D	MAX. Pin Depth
ANO6212-3014-1	0.23	2.00
ANO6212-3014-2	0.30	2.00

4.80
[.189]
10.20
[.402]
ø14.00
[.551 DIA.]
2-ø2.60
[.102 DIA.]
SOCKET TO ACCEPT "D" PIN

11.30
[.445]
1.60
[.063]
0.10
[.004]
M7x0.75
[R.P.]
8.30
[.327]

Connector No.	D	MAX. Pin Depth
ANO6212-3015-1	0.23	2.0
ANO6212-3015-2	0.30	2.0

11.35
[.447]
1.65
[.065]
0.01-0.13
[.0005-.0050]
M7x0.75

4.80
[.189]
9.02
[.355]
ø12.70
[.500 DIA.]
4-ø2.60
[.102 DIA.]
SOCKET TO ACCEPT "D" PIN

Connector No.	D	MAX. Pin Depth
ANO6212-3020-1	0.23	2.00
ANO6212-3020-2	0.30	2.00